



Elegance - EL1003



Elegance - EL1003

- energy efficient EC motor - lowest energy consumption of comparable fan in the UK
- provides low level continuous ventilation to control condensation
- 3 speed axial fan
- powerful low profile unit
- wall, ceiling or window (with additional window kit)
- low noise levels
- low running costs
- for any domestic wet room
- complies with Building Regulations Parts L1A 2013 and F 2013



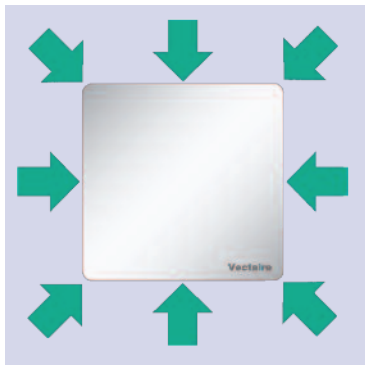
Elegance - EL1003

GENERAL FEATURES

- exhausts directly to the outside (through wall, or window installation with additional window kit, or with medium length ducting - up to 6m)
- sfp down to 0.09 W/l/s
- easy and economical to install and maintain
- runs continuously at pre-selected choice of two speeds (fixed at installation)
- Speed 1 operates at 8 l/s (factory set)
- Speed 2 operates at 13.6 l/s
- speed boosted to maximum (26.9 l/s) using integral pull cord or by:
 - remote switch/light switch
 - PIR sensor
 - DRH240 (dynamic remote humidistat)
- anti-vibration gasket
- patented anti-turbulence deflectors ensure very low noise levels and optimum performances
- energy saving ventilation
- **extremely low running costs**
- low carbon footprint
- 5 year warranty - 1 year parts and labour, 4 years parts only

TECHNICAL FEATURES

- shockproof, high quality technopolymer casing
- designed using latest wind tunnel technology and CFD simulations
- EC induction motor with thermal protection
- 43,000 hour life motors with maintenance free and long life ball bearings
- operates in ambient temperatures up to 40°C
- double insulated - no earth required
- IPX4 Splashproof rated - can safely be installed in Zones I and II

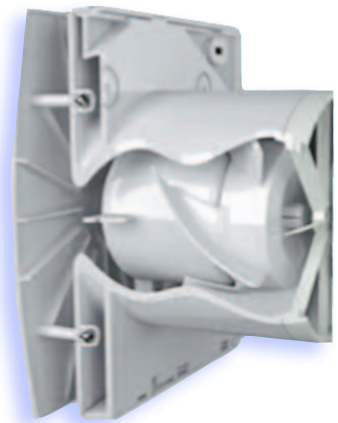
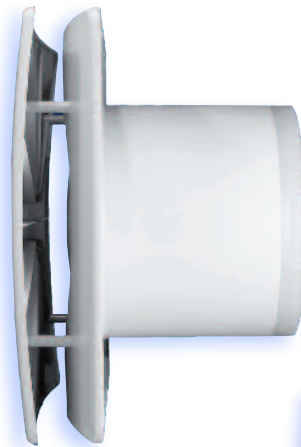


COMPLIES WITH

- Part L1A 2013 of Building Regulations for enhanced energy saving capability
- Part F 2013 of Building Regulations for reliable, efficient ventilation
- EU RoHS Directive Compliant.
- Complies with IEC60335-2-80, LVD2006/95/CE and EMC2014/30/UE (European Directive against radio interference and electro-magnetic compatibility)
- CE marked
- SAP PCDB Listed
- Energy Saving Trust Best Practice Compliant

TYPICAL SPECIFICATION AVAILABLE AT

<http://www.vectaire.co.uk/downloads>



MODELS AVAILABLE:

- **EL1003** - 3 speed, continuous running, cord or remote
- **EL1003DT** - 3 speed, continuous running with comfort timer (timer does not activate unless fan has been running for 2 minutes to avoid unnecessary night-time operation) and pull-cord
- **EL1003HDT** - with comfort timer, humidistat and pull-cord
- **EL1003LV** - 3 speed, continuous running with pull-cord - LOW VOLT (SELV)
- **EL1003DTLV** - 3 speed, continuous running, with comfort timer, and pull-cord LOW VOLT (SELV)
- **EL1003HDTLV** - 3 speed, continuous running, with comfort timer, humidistat and pull-cord - LOW VOLT (SELV)

N.B timer adjustable from 0-30 mins

Vectaire Ltd can supply all accessories for use with these units, including product filters, air filter cassettes, silencers, fire dampers, air valves, ducting, outside grilles and wall cowls. Additionally, Vectaire offers a design service to ensure that the unit installed is the best possible to provide efficient, effective, low energy and low running cost ventilation. Vectaire can also organise installation, commissioning and maintenance of these products.

N.B These fans are NOT suitable for use with Gravity Grilles. They should be installed using either Cowls or Fixed Grilles. Only approved accessories should be used:

Wall Plates – as required

Window kits – as required

Wall terminations – all wall terminations must use the approved wall cowl or high rise kit



Elegance - EL1003

| TECHNICAL CHARACTERISTICS | | | | | | | | | |
|---------------------------|---------------|-----------|-------|---------------|-----------|-------|--------------------------|-----------|-------|
| Model | Airflow l/sec | | | Power - Watts | | | dBA (@ 3m in free field) | | |
| | Trickle 1 | Trickle 2 | Boost | Trickle 1 | Trickle 2 | Boost | Trickle 1 | Trickle 2 | Boost |
| EL1003 | 8 | 13.6 | 26.9 | 0.5 | 0.8 | 3.5 | 15.1 | 17.3 | 31.4 |

| RESULTS for SAP CALCULATIONS ENERGY LEVEL PERFORMANCE - using rigid ducting only | | | |
|---|----------------------------|---|-------------------|
| Unit Configuration | Specific Fan Power (W/l/s) | EST Best Practice Performance Compliant | Flow Rate (l/sec) |
| In room - kitchen | 0.12 | Yes | 13.0 |
| In room - wetroom | 0.11 | Yes | 8.0 |
| Through wall - kitchen | 0.09 | Yes | 13.0 |
| Through wall - wetroom | 0.09 | Yes | 8.0 |

Figures from BRE test results at minimum flow rate conditions

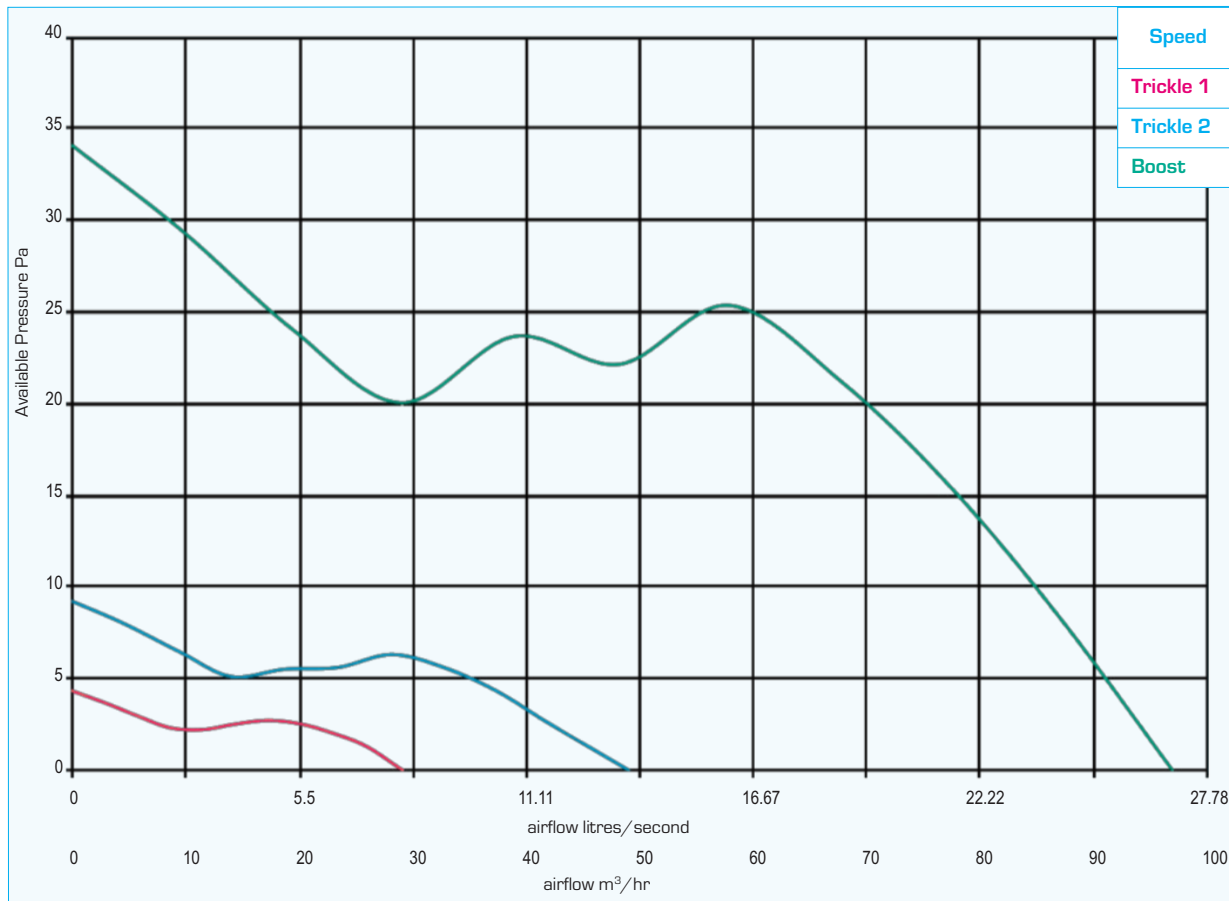
| RESULTS for SAP CALCULATIONS ENERGY LEVEL PERFORMANCE - using flexible ducting only | | | |
|--|----------------------------|---|-------------------|
| Unit Configuration | Specific Fan Power (W/l/s) | EST Best Practice Performance Compliant | Flow Rate (l/sec) |
| In room - kitchen | 0.13 | Yes | 13.0 |
| In room - wetroom | 0.11 | Yes | 8.0 |
| Through wall - kitchen | 0.09 | Yes | 13.0 |
| Through wall - wetroom | 0.09 | Yes | 8.0 |

Figures from BRE test results at minimum flow rate conditions



Elegance - EL1003

PERFORMANCE (curves are for guidance only)



DIMENSIONS - mm

